



Davenport Lutheran Home, Montag Architects - Davenport, IA

MONTAG ■ ARCHITECTS

Montag Architects is a professional, full service architectural firm based in Cedar Rapids, Iowa, specializing in the planning and design of senior living and healthcare facilities. We offer a full range of senior living project options from independent living residences to state-certified skilled nursing care to Alzheimer's/dementia care units. Healthcare facilities projects range from patient care floors to imaging to surgical suites. Our services cover every phase of the project process from budget analysis to schematic design to construction administration and post-occupancy evaluation.

Our Philosophy

The practice of architecture is a science and an art. We have a passion for both. Our philosophy is to partner with our clients to reach a complete understanding of their mission and vision and to approach each project with this innate passion and love for what we do. Our desire is to always listen first, then serve our clients' needs by delivering exceptional service and work. We're obsessive about details. We thrive on being thorough and concise. Our hope is to create spaces that are beautiful and fully functional to help residents and their families feel that they are safe, comfortable, and cared for with dignity and compassion.



Harrogate Retirement Community, HLM- Lakewood, NJ



Paul J. Montag, AIA, NCARB



Stonehill Franciscan Services, WPA - Dubuque, IA

Our Credentials

Montag Architects is led by Paul J. Montag, AIA. With over 35 years experience and scores of successfully completed projects, Paul has established himself as an expert in the very specialized field of design for senior living and healthcare facilities. Paul graduated from Iowa State University with a Bachelor of Arts in Architecture. After graduation, Paul became a Project Architect at Hansen Lind Meyer (HLM) in Iowa City. While practicing there, he worked on such projects as Harrogate in Lakewood, New Jersey, Essex Meadows in Essex, Connecticut, and North Oaks in Baltimore, Maryland. In 1988, Paul joined William Peterson Architects (WPA) in North Liberty, Iowa. Paul is a registered architect and a proud member of the American Institute of Architects, NCARB (the National Council of Architectural Registration Boards), and the American Institute of Architects, Iowa. Montag Architects was formerly known as William Peterson Architects, founded in 1986, and renamed in 2016.



Member of
The American
Institute of Architects

Our Approach

No one can whistle a symphony. Successful projects are the result of a strategic team effort. We share a common goal with our senior living clients: meeting the social and physical needs of senior residents. For residents and their families, we strive to design environments that give a sense of belonging, independence, dignity, and security. For senior care owners and administrators, we strive to help you create environments that enrich the lives of residents. We help you look to the future and incorporate amenities appropriate to your residents' needs and desires, while preserving a residential character that moves away from an institutional feel.

Step One.

We start by listening. Your project deserves our full attention before a design solution can be offered. We know that good communication with our clients is the first step to finding the best solutions to design problems. We best serve your needs by listening.

Step Two.

Collaboration. The collaborative process and open dialogue gives your project the strength it needs to succeed. We recognize that our clients' involvement is essential and integral throughout the design process. By working together in partnership, we are able to find excellent design solutions that are within code and adhere to your budget and schedule constraints.

Step Three.

Design. Form follows function. The shape of your facility should be based on its intended function or purpose. After the project goals and requirements are determined, the design phase begins. This phase often produces a site plan, floor plans, sections, an elevation and other illustrative materials.

Step Four.

Implementation. Once your contractors have been selected and construction is under way, construction administration begins. We administer the construction phase to assure conformance with the design, visit the site during construction and address any issues that may arise.



Unity Clinic & Hospital, WPA - Muscatine, IA



Essex Meadows, HLM - Essex, CT



Guthrie County Hospital, WPA- Guthrie Center, IA



Park Centre, WPA - Newton, IA



Stonehill Franciscan Services, WPA - Dubuque, IA



Stonehill Franciscan Services - Wellness Center, WPA



Stonehill Franciscan Services - HydroWorx Pool, WPA



Our Process

Measure twice, cut once. We believe in doing things the right way the first time. Getting a project designed and built is a process. This means that every project is approached in a careful and thorough manner.

Our process typically includes the following phases:

- **Inspection and analysis** of existing buildings
(for additions and remodels)
- **Program** - Consultation with owners and/or administrators to determine project goals. Define the required functions of the project and the estimated square footage.
- **Schematic Design** - Develop study drawings and documents to illustrate the concepts of the design.
- **Budget Analysis** - Forecast construction costs based on analysis of materials and labor for all items of project work.
- **Design Development** - Lay out the mechanical, electrical, plumbing, structural, and architectural details.
- **Construction Documents** - Drawings created with greater detail that include specifications for construction materials.
- **Bidding** - Preparation of bid documents to go out to potential contractors for pricing. Bids are evaluated and the winning bid selected.
- **Construction Administration** - Help the contractors build the project as specified in the construction documents as approved
- **Post-Occupancy Evaluation** - Obtain feedback and evaluate the project/building performance

SCOPE OF SERVICES

Services include Architectural Design, Master Planning, Site Planning, Budgeting, and Graphic Design

PROJECTS

Senior Living

- Independent Living Duplexes
- Assisted Living Apartments
- Skilled Nursing
- Alzheimer's/Dementia Care Units
- Physical Therapy Centers
- HydroWorx Pools
- Chapels
- Auditoriums
- Libraries

Healthcare Facilities

- Patient Care Floors
- Intensive Care Units
- Imaging/MRI
- Rehabilitation
- Emergency Departments
- Surgery Suites
- Specialty Clinics
- Central Processing/Sterile
- FEMA Rated Tornado Shelters
- Hyperbaric Oxygen Units
- Wellness Centers



Solon Care Center, WPA - Solon, IA

NOTABLE CLIENTS

- Vinton Lutheran Home - Independent Living Duplexes
- Solon Care Center - Assisted Living Apartments
- Stonehill Franciscan Services - Skilled Nursing and Physical Therapy Center
- Davenport Lutheran Home Memory Care - Alzheimer's/Dementia Care Units
- Guthrie County Hospital and Clinic - Healthcare Facility



Galena Staus Senior Care Community, WPA - Galena, IL



Green Hills Townhomes, HLM - Ames, IA



Private Residence



Private Residence

REFERENCES

"Paul has an attentive nature to detail, formulating a natural flow of essential senior design processes improving upon resident safety and owner satisfaction. Over the life of Paul's architectural career he has acquired a vast amount of experience that would benefit any facility wishing to expand senior living services. Paul is an experienced and trusted advisor, providing cost-effective solutions to the most demanding budget and is a joy to work with on any project."

- Delbert Stevens, AIA, President, Vermillion Design Group

"It was a pleasure to work with Paul. He is meticulous and dedicated, very creative and his design ideas were the perfect solution. We have complete confidence and trust in his expertise and knowledge of architecture."

- Ernie Karas, Residential Client

CONTACT

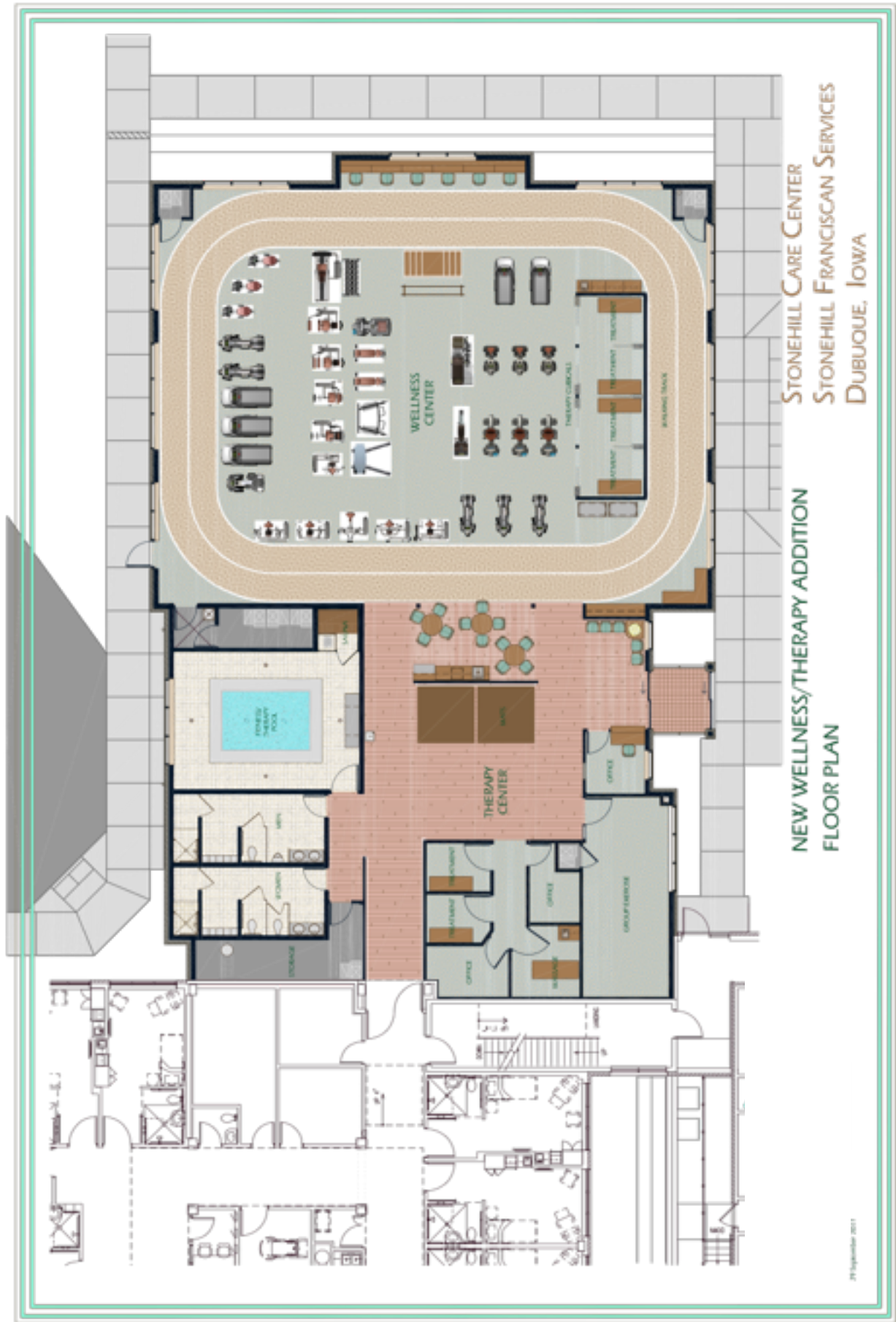
Paul J. Montag, AIA
Owner/Principal
paul@montagarchitects.com
319-350-2518

Carol A. Montag
Director of Marketing
carol@montagarchitects.com
319-310-7090

MONTAG ■ ARCHITECTS

www.montagarchitects.com

3206 Timber Valley Court NE - PO Box 11395 - Cedar Rapids, IA 52410 - 319-350-2518 - montag.architects@gmail.com

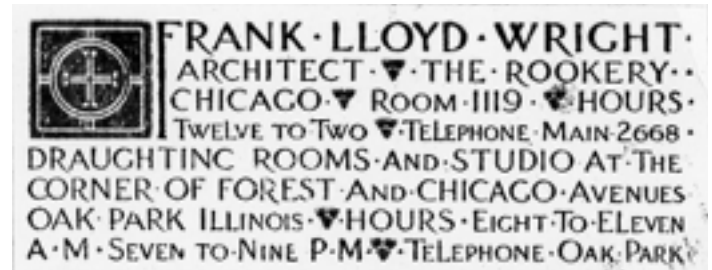


MONTAG ■ ARCHITECTS

About Our Logo

When we asked our graphic designer to design a logo for our firm we had one request - keep it clean and simple. When presented with a number of choices, we knew immediately which design best expressed our brand - the design with the small red square in the center. Our principal architect expressed excitement in the fact that our designer came up with this logo without knowing that famous American architect, Frank Lloyd Wright used a red square extensively in his practice.

To Wright, the color red was the color of creation. The red square was an iconic symbol that Wright used in his drawings placed either in the lower right or left corner. When the drawing was approved, Wright would sign the red square with his initials "FLW", and the date of approval. Later, red square tiles would be used in the actual buildings, with his initials to represent the approval of the final construction. - The FLW Foundation



Note: Montag Architects is not the architectural firm of record on those projects designated or noted as HLM (Hanson Lind Meyer) or WPA (William Peterson Architects) However, Paul J. Montag, AIA was the Project Architect on the projects noted here while employed at these firms.

MONTAG ■ ARCHITECTS
www.montagarchitects.com

3206 Timber Valley Court NE - PO Box 11395 - Cedar Rapids, IA 52410 - 319-350-2518 - montag.architects@gmail.com